

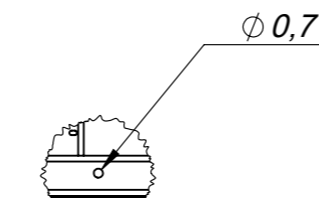
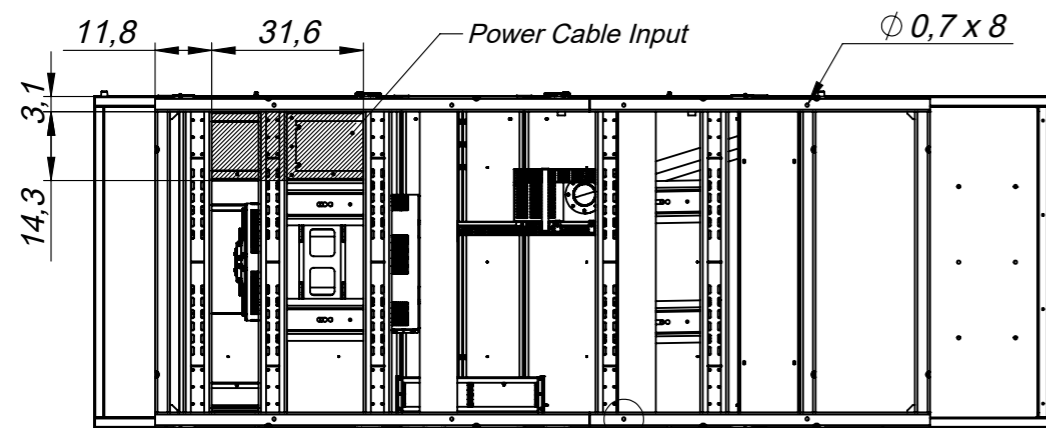
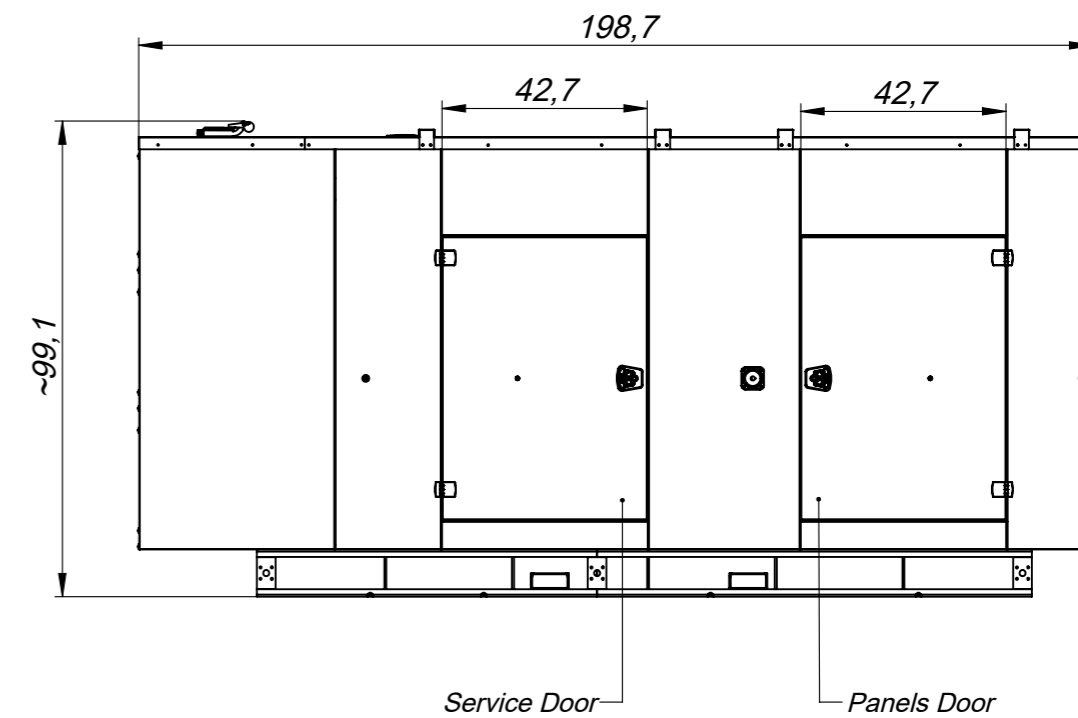
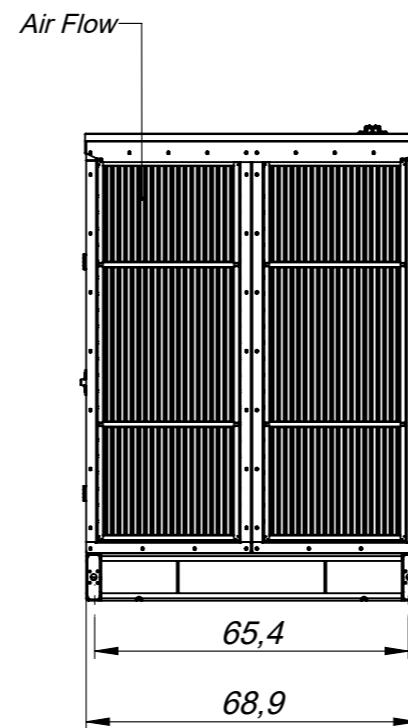
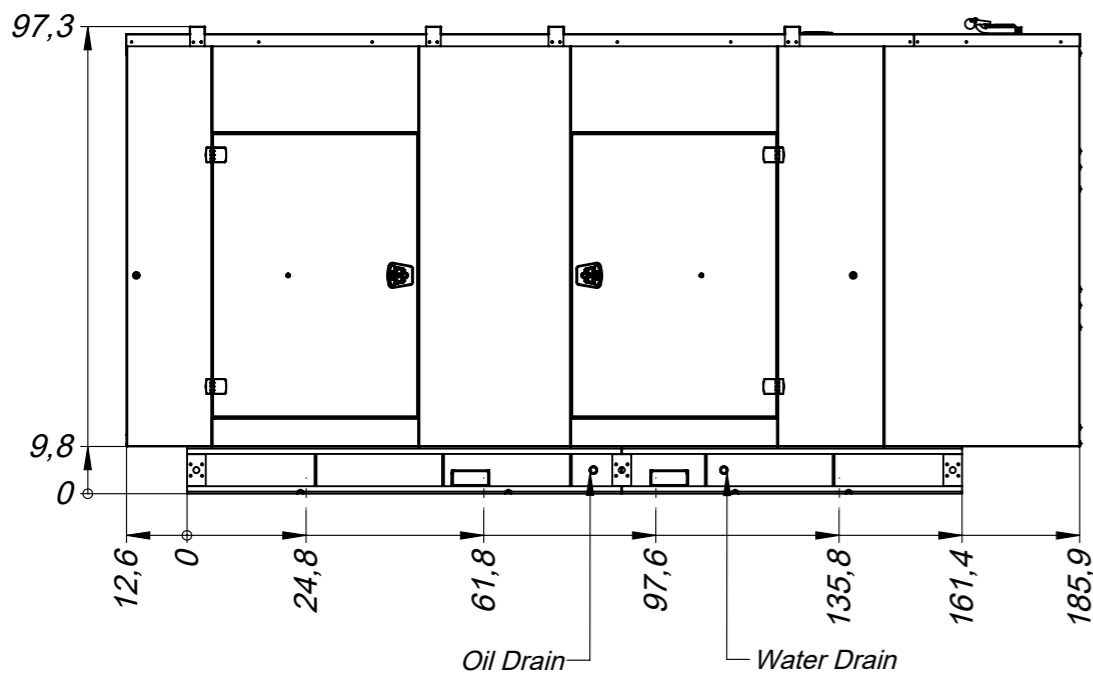
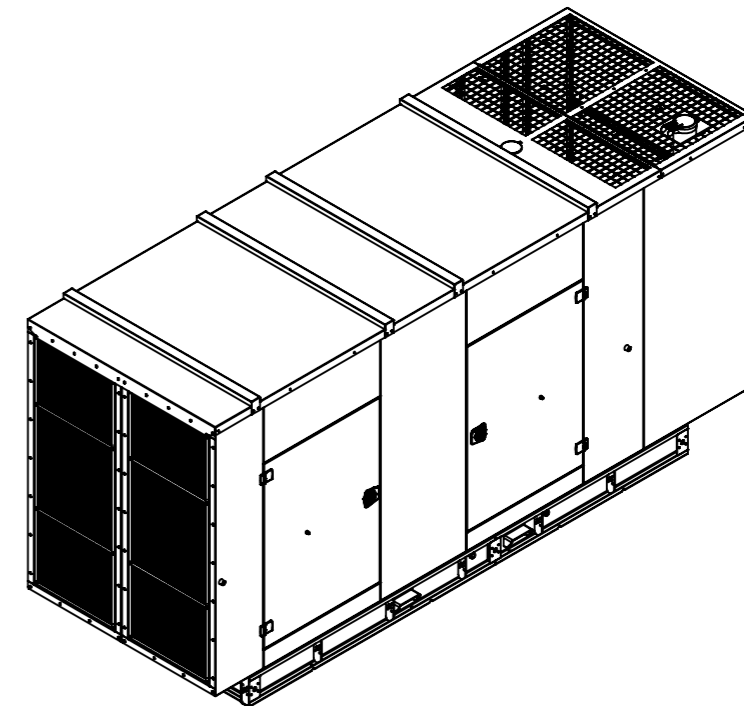
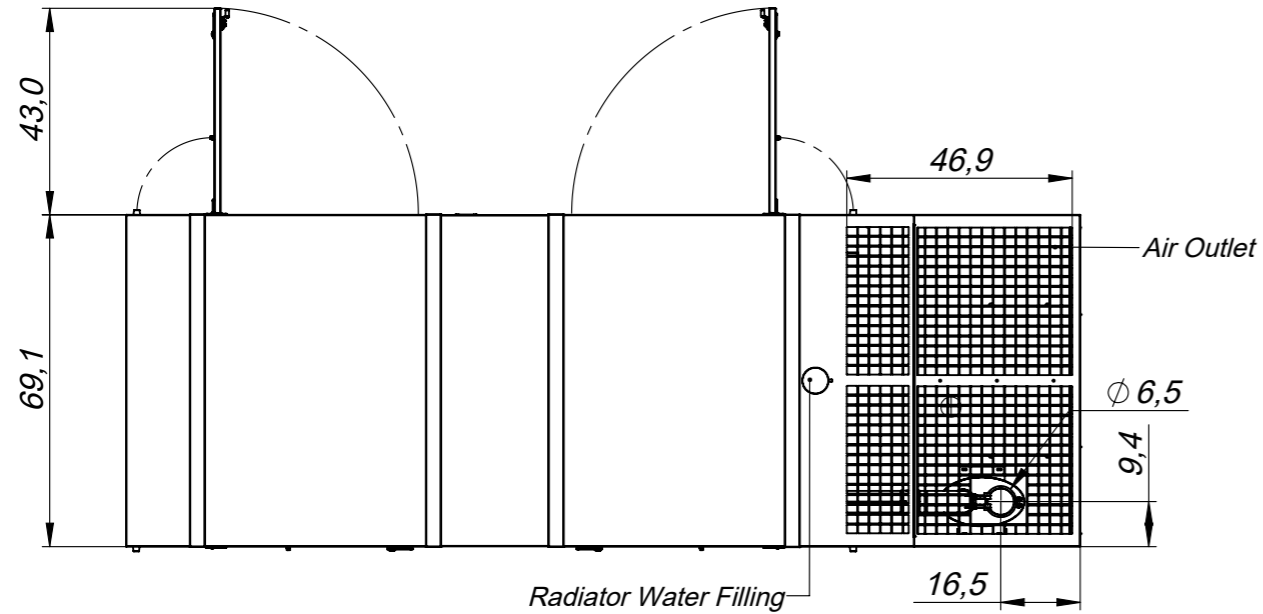
DIMENSIONAL DRAWINGS



ENGINES

2206D-E13TAG2

2206D-E13TAG3



DETAIL A
SCALE 1 : 15

SCALE

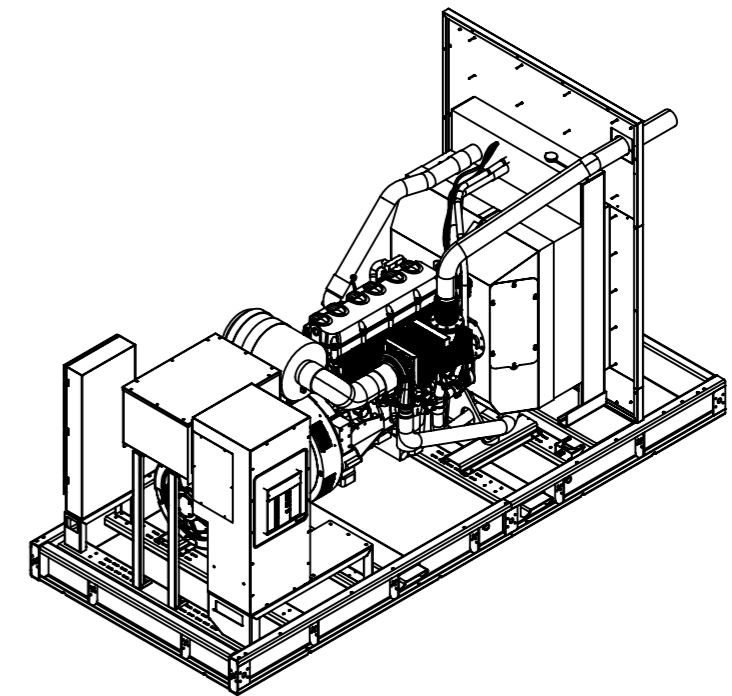
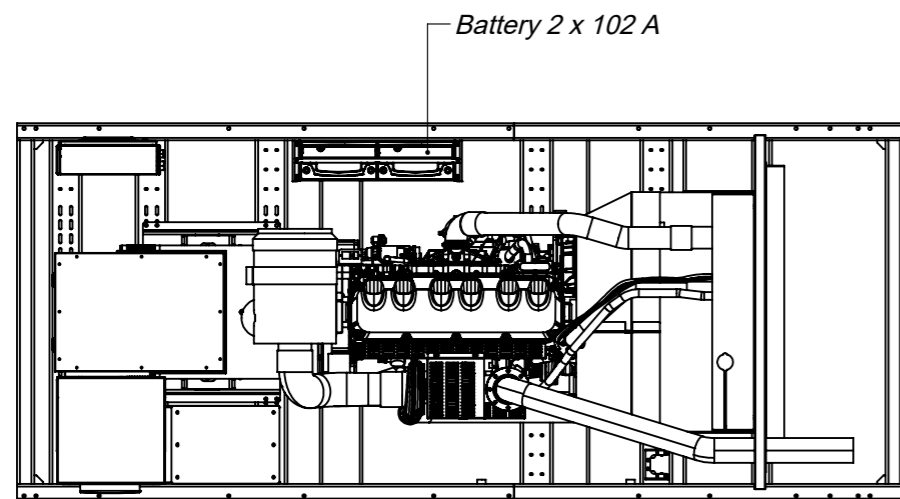
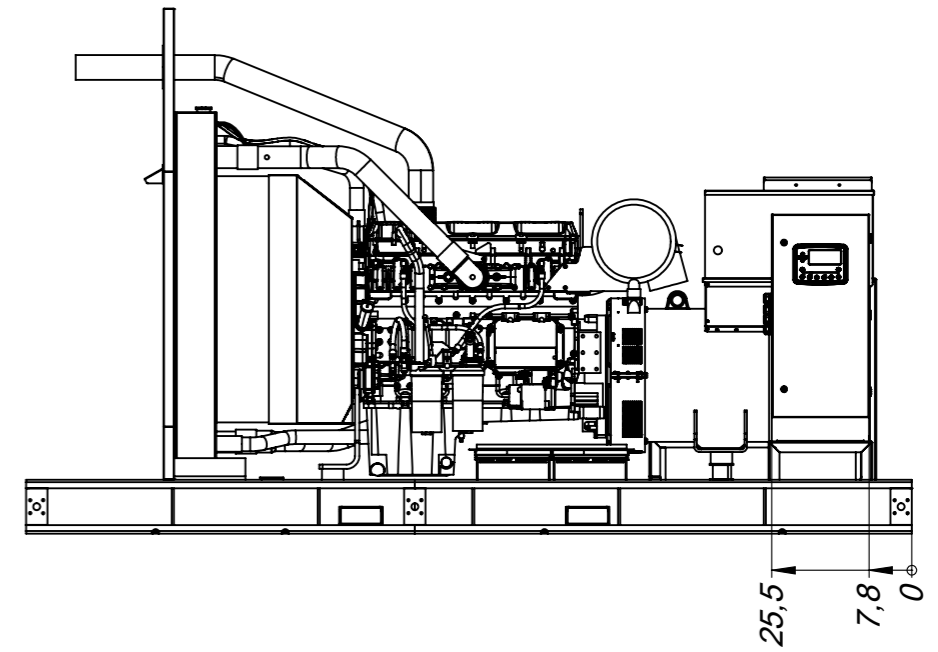
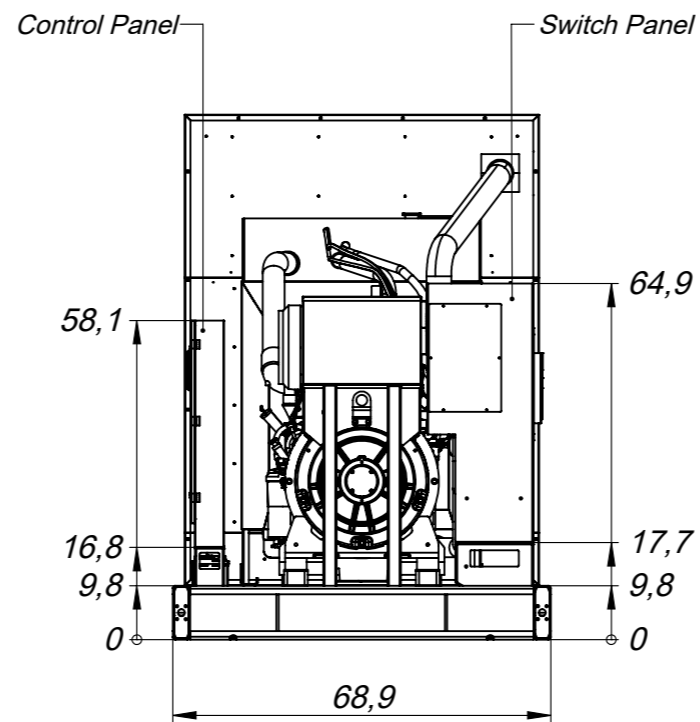
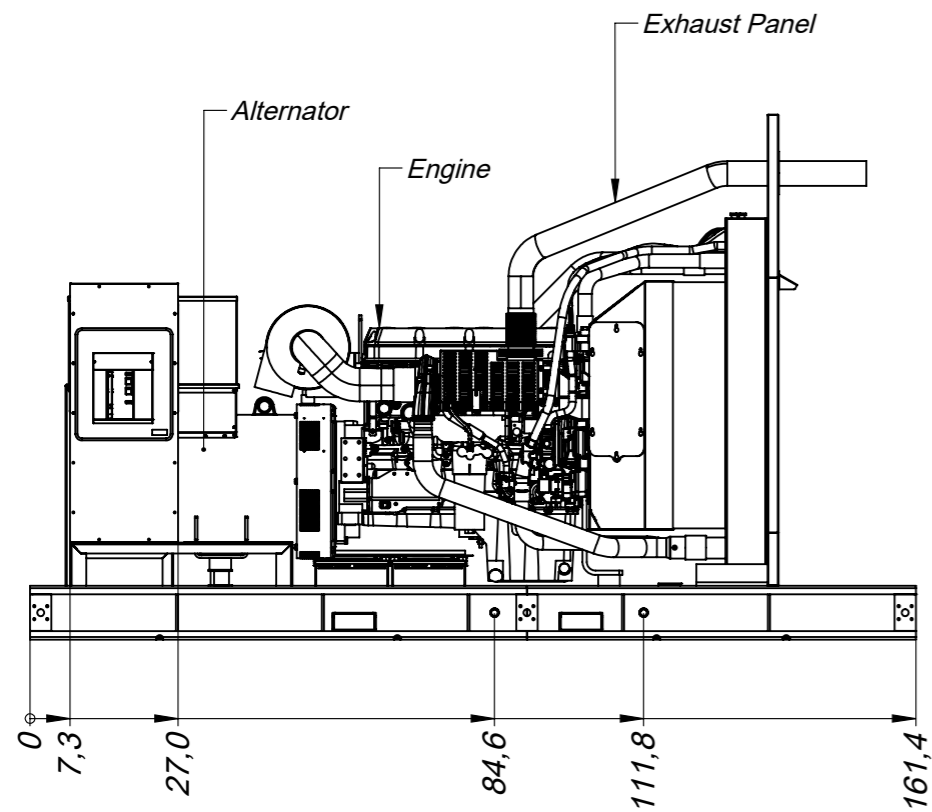
Do not take measurements based on the drawing.
This illustration may be changed without notice and is for informational purposes only.

| | | | | |
|----------------------|------------|----------|--------------|--------------|
| | Tolerances | Name | Date | Document No |
| | N / A | Drawn | Melih Gülşen | 11-01-2024 |
| | | Checked | - | - |
| | | Approval | - | - |
| 1. Projection Method | Paper Size | Scale | Order No | Rev. No |
| | A3 | 1:40 | - | - |
| * _ * | | | | Title |
| | | | | DRAFT |

ENGINES

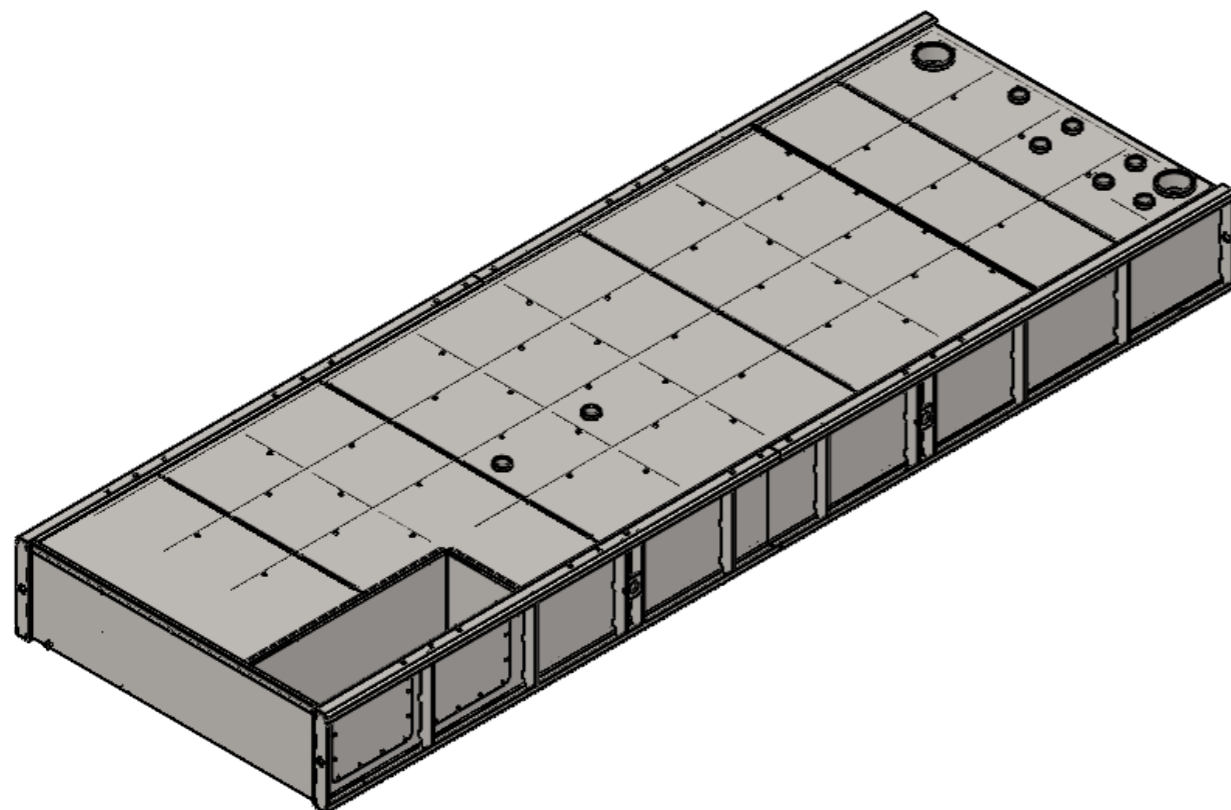
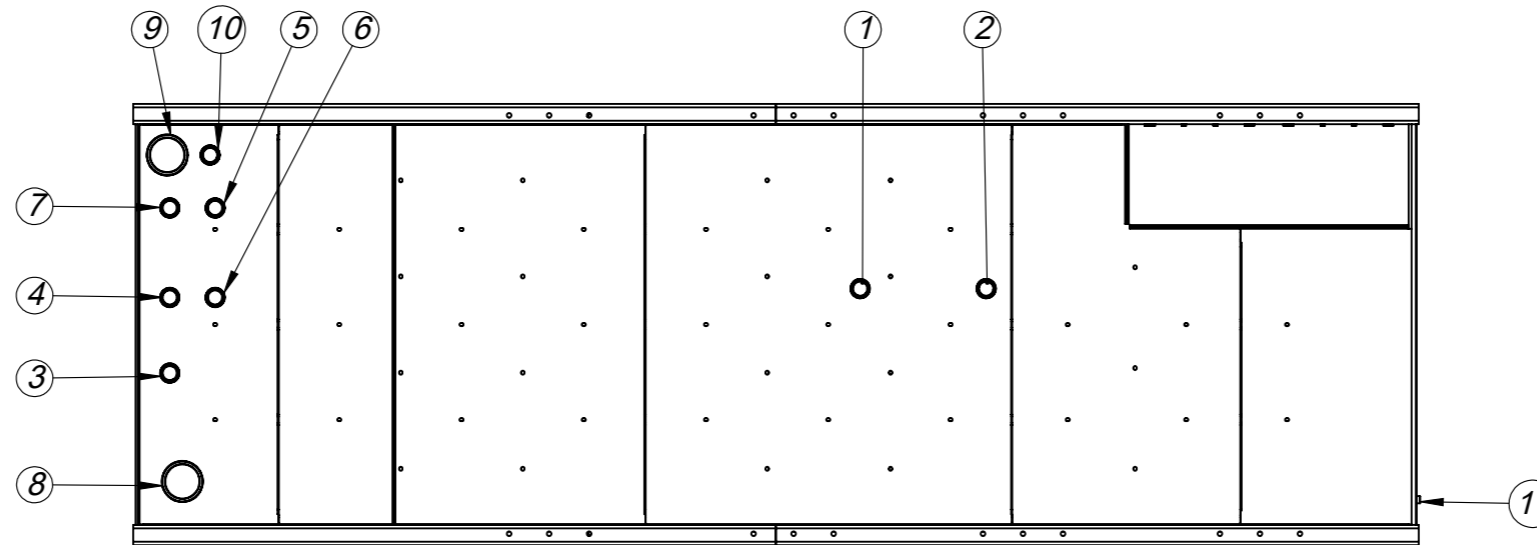
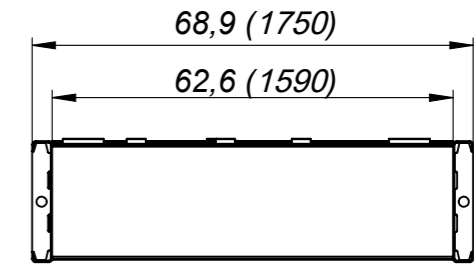
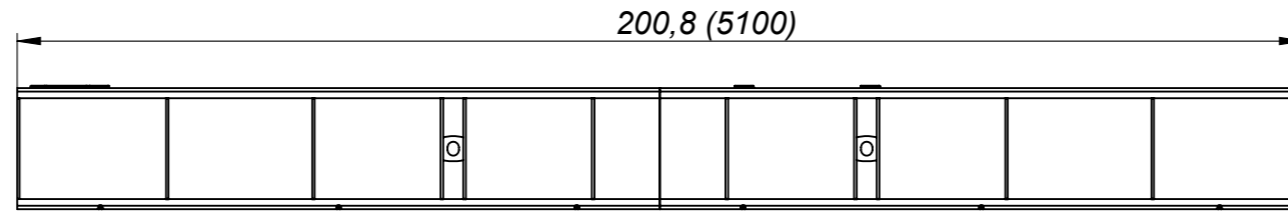
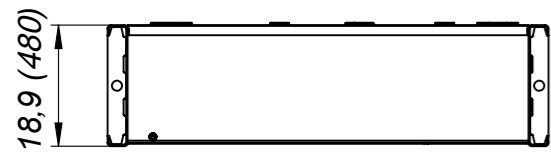
2206D-E13TAG2

2206D-E13TAG3



Do not take measurements based on the drawing.
This illustration may be changed without notice and is for informational purposes only.

| | | | | |
|-------|----------------------|--------------|------------|--------------|
| | Tolerances | Name | Date | Document No |
| | N / A | eda.bakar | 13-11-2023 | SM-231184580 |
| | | Melih Gülşen | 27-12-2023 | Part Code |
| | | Goktug Ada | 27-12-2023 | - |
| * _ * | 1. Projection Method | Scale | Order No | Rev. No |
| | | A3 | 1:35 | - |
| | | | | Title |
| | | | | DRAFT |

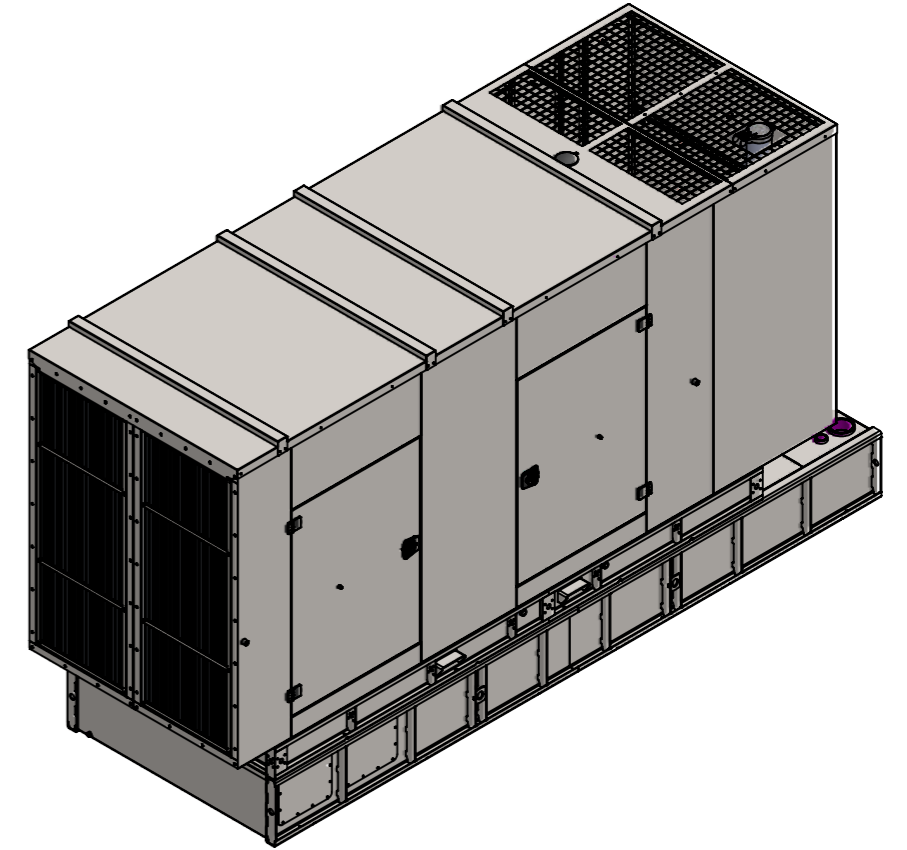
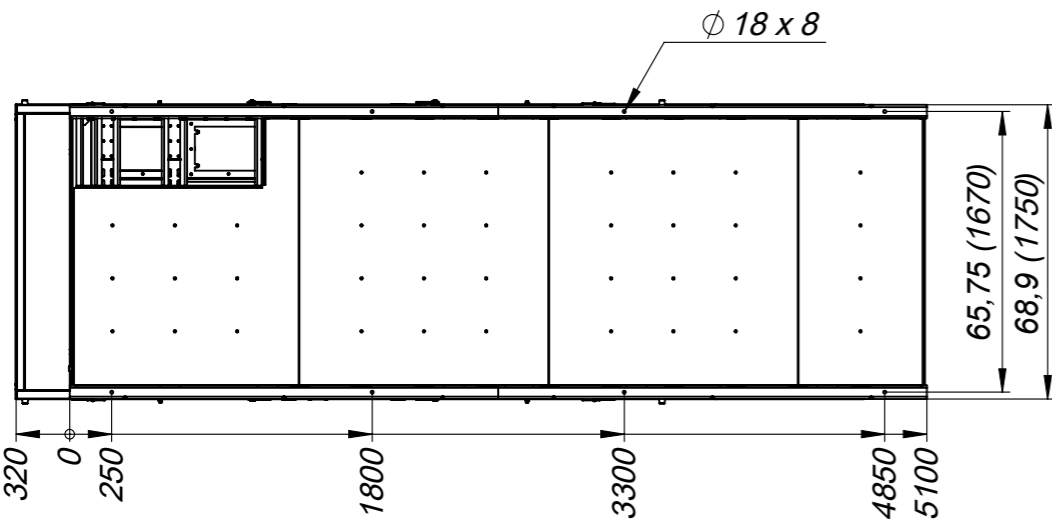
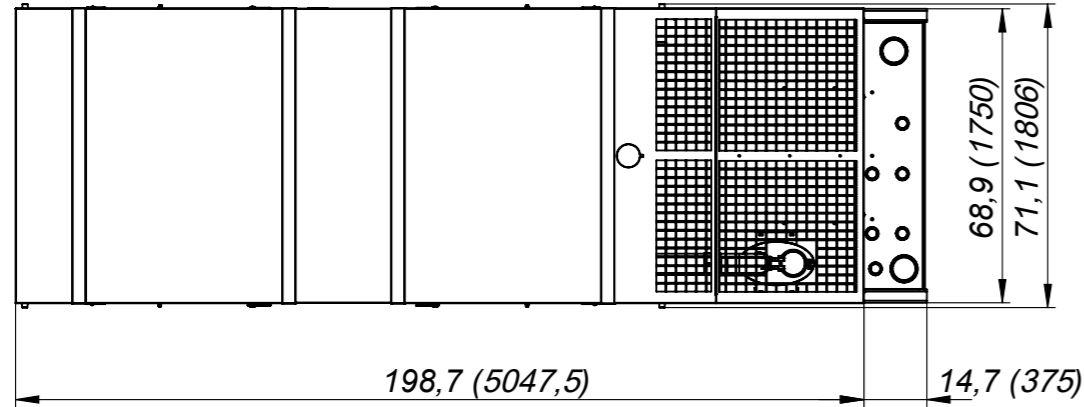
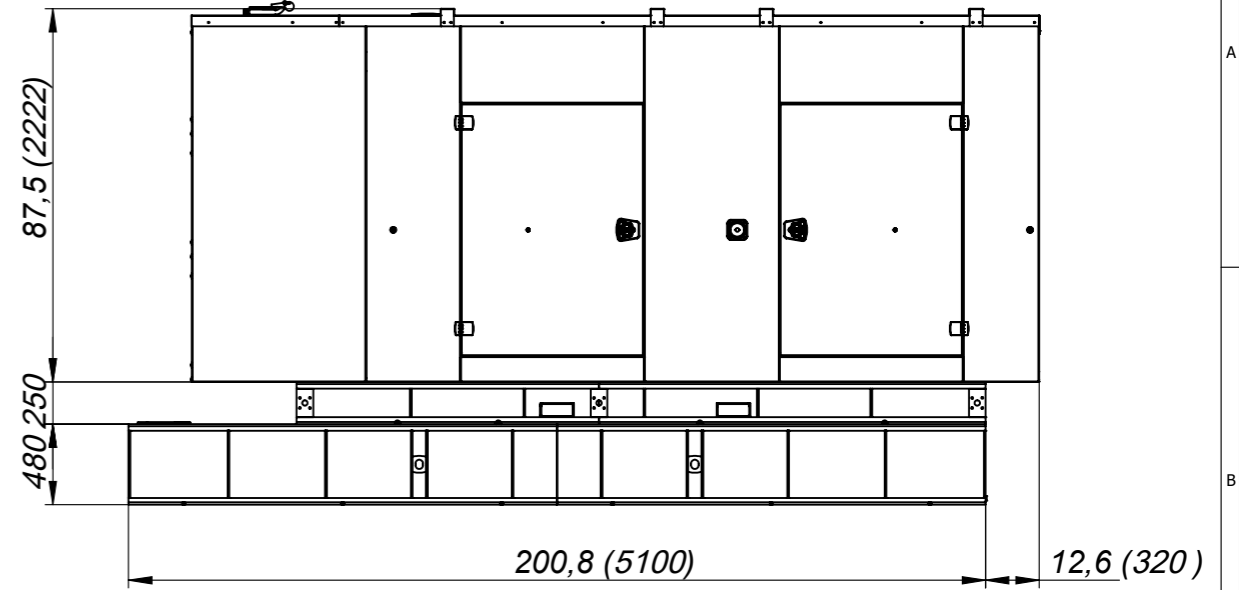
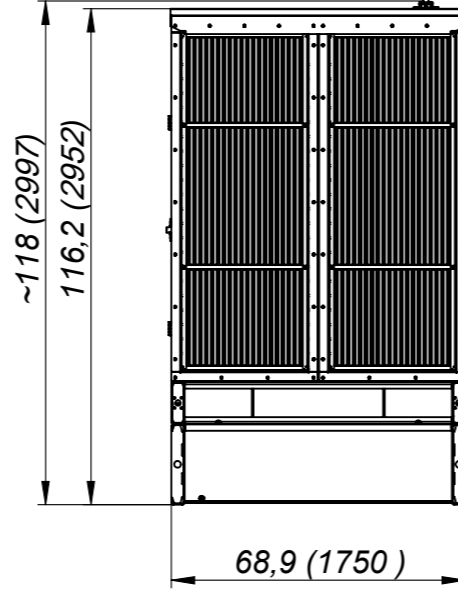
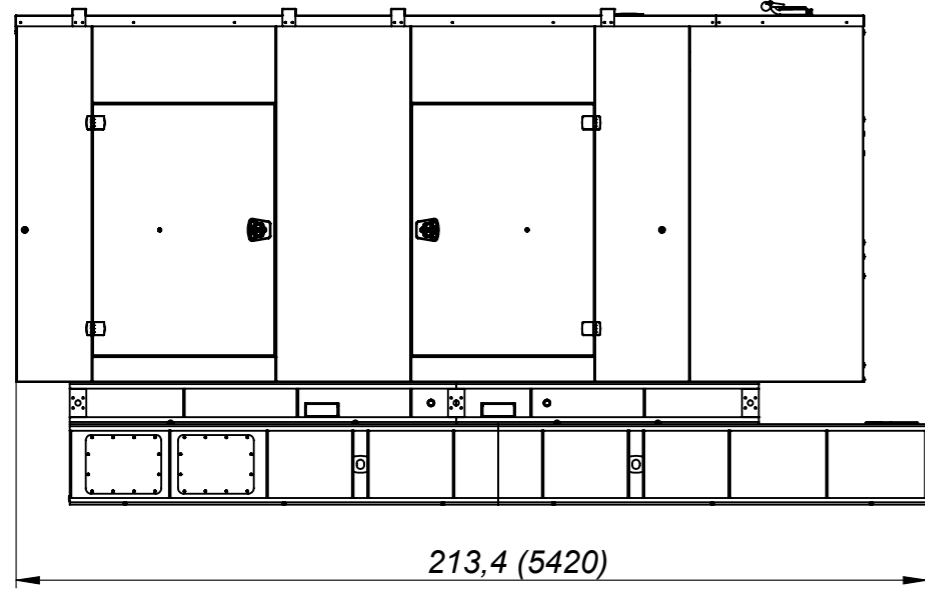


| |
|--------------------------------------|
| UL 142 |
| GROUP-5 (700 GALLON) |
| NOTES (PRIMARY STEEL TANK) |
| Thickness of tank; |
| Lifting Lug & Support Brackets: 10mm |
| Primary Tank: 4mm |
| Secondary Tank: 6mm |
| TANK SPECIFICATION |
| Shell Material: S235JR |
| Coupling Material: ASTM A106 |

| MARK | QUANTITY | SIZE | SPECIFICATION | DESCRIPTION |
|------|----------|------------|---------------|-------------------------|
| 11 | 1 | 1/2" (NPT) | ASTM A105 | Secondary Tank Drain |
| 10 | 1 | 2" (NPT) | ASTM A105 | Leak Detection Coupling |
| 9 | 1 | 5" (NPT) | ASTM A105 | Secondary Tank E. Vent |
| 8 | 1 | 5" (NPT) | ASTM A105 | Primary Tank E. Vent |
| 7 | 1 | 2" (NPT) | ASTM A105 | Normal Vent |
| 6 | 1 | 2" (NPT) | ASTM A105 | Fuel Low Level Sensor |
| 5 | 1 | 2" (NPT) | ASTM A105 | Fuel High Level Sensor |
| 4 | 1 | 2" (NPT) | ASTM A105 | Automatic Tank Gauge |
| 3 | 1 | 2" (NPT) | ASTM A105 | Filling Coupling |
| 2 | 1 | 2" (NPT) | ASTM A105 | Return Coupling |
| 1 | 1 | 2" (NPT) | ASTM A105 | Suction Coupling |

| | | | | | |
|---------------|--------------------------|--------------|---------------|--------------|-----------|
| TEKSAN | Tolerances | Name | Date | Document No | |
| | ISO 2768 | Yasin Parlak | 23-10-2023 | SM-231084318 | |
| | 1. Projection Method | Checked | Ferhat Nergis | 04-12-2023 | Part Code |
| | | Approval | Murat Uysal | 04-12-2023 | - |
| *_* | Paper Size | Scale | Order No | Rev. No | |
| | A3 | 1:30 | - | R00 | |
| | | | | Title | |
| | | | | DRAFT | |

Do not take measurements based on the drawing.
This illustration may be changed without notice and is for informational purposes only.



Do not take measurements based on the drawing.
This illustration may be changed without notice and is for informational purposes only.

| | | | | | | | |
|-----------|-----------------|---------------|------------|------------------------------|----------|-----------|--------------|
| | Toleranslar | İsim | Tarih | Ağırlık | Rev. No | Çizim No | SM-231184576 |
| | ISO 2768 | Çizen | 13-11-2023 | 5712232.33 gr. | R01 | | |
| * - * | İzdüşümü Metodu | Kontrol | 21-12-2023 | Yüzey Alanı | Kalınlık | Stok Kodu | - |
| | Onay | Goktug Ada | 25-12-2023 | 377282218.43 mm ² | | | |
| | Sayfa | Ölçek Malzeme | Sipariş No | Ebatlar | Tanım: | | DRAFT |
| | A3 | 1:45 | | 1806 x 2996,7 x 5227,3 | | | |